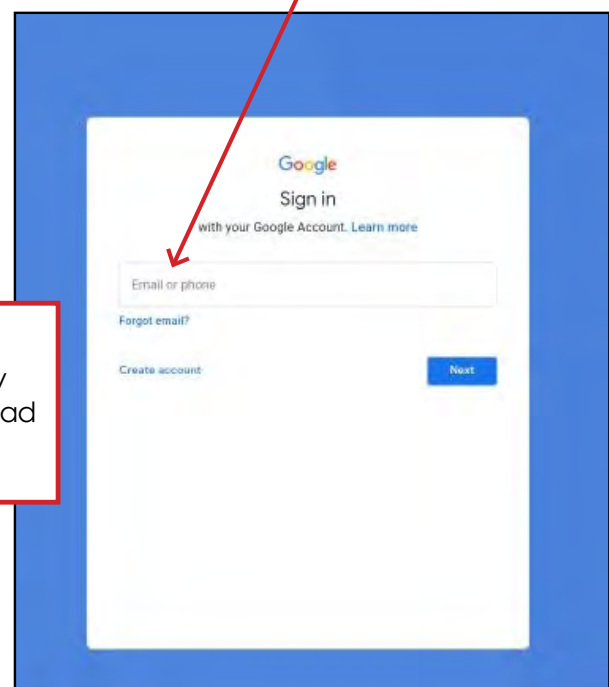
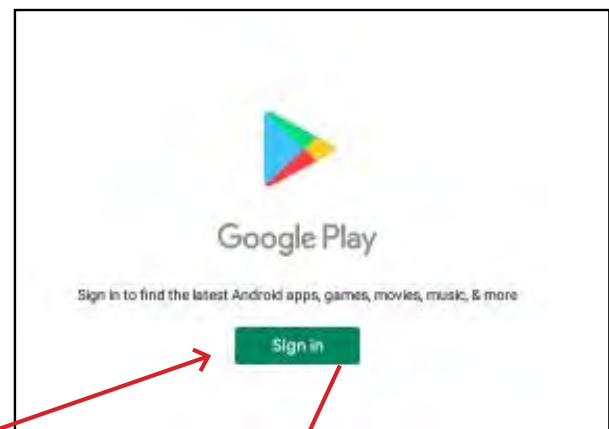
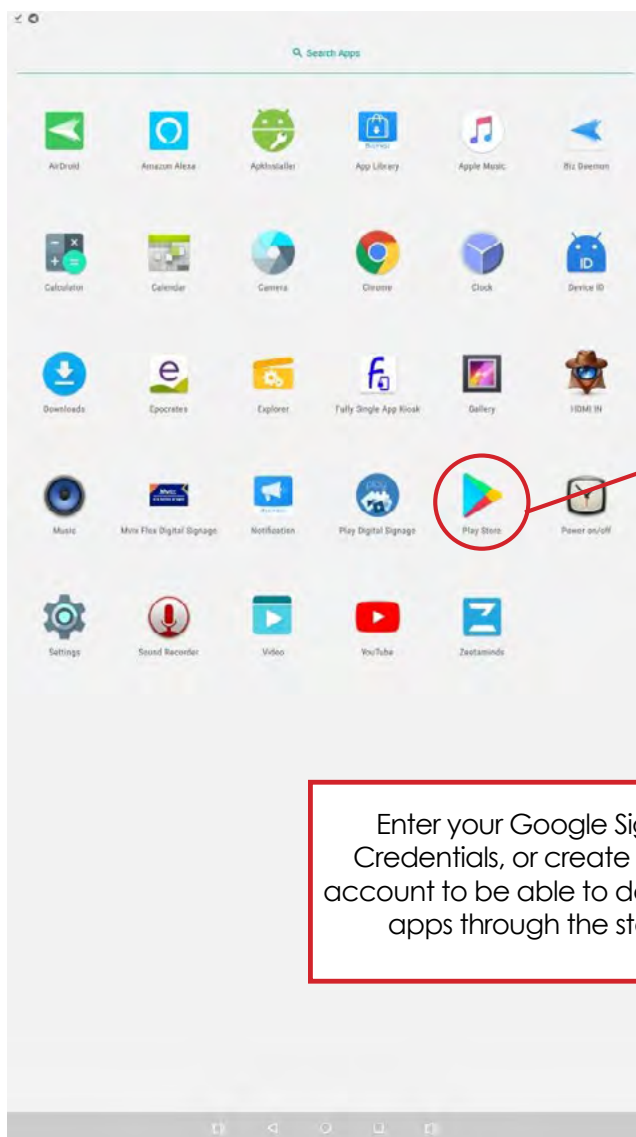


After your device is connected to the internet, you can start installing the Play Digital Signage Application for Android.

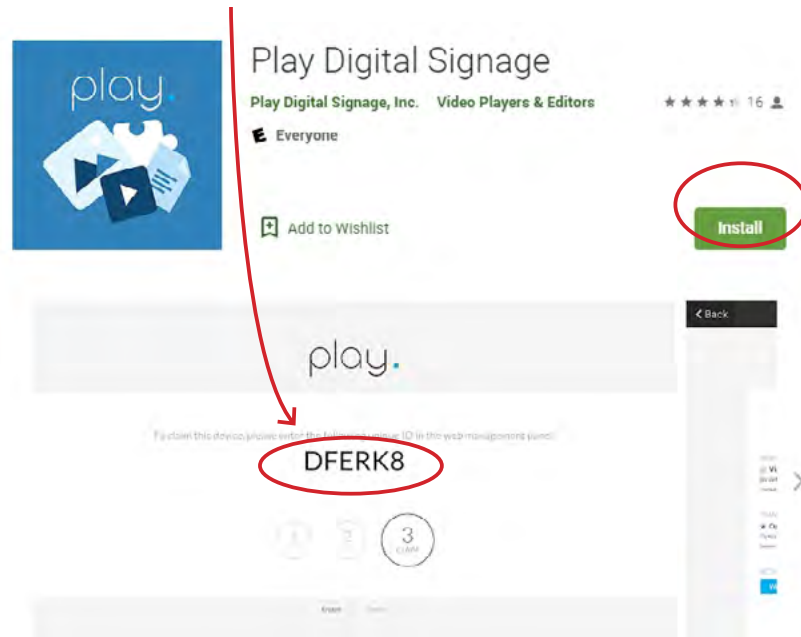
To install the application, we recommend using the Google Play Store, which requires a Google or Gmail Account. It will allow regular updates to be scheduled automatically. Note: you can also install the application as an APK file, but we do not recommend this as it requires manual updates.

- Method #1 Power on your smart android device.
- Tap in the App Drawer to locate the Google Play Store (Google Play Store should be pre-installed and enabled, otherwise Go to Settings).
- Start the app, and Sign in with a registered Gmail account. If you don't have one, you will need to create a Google account to be able to download any apps from the Google Play Store.

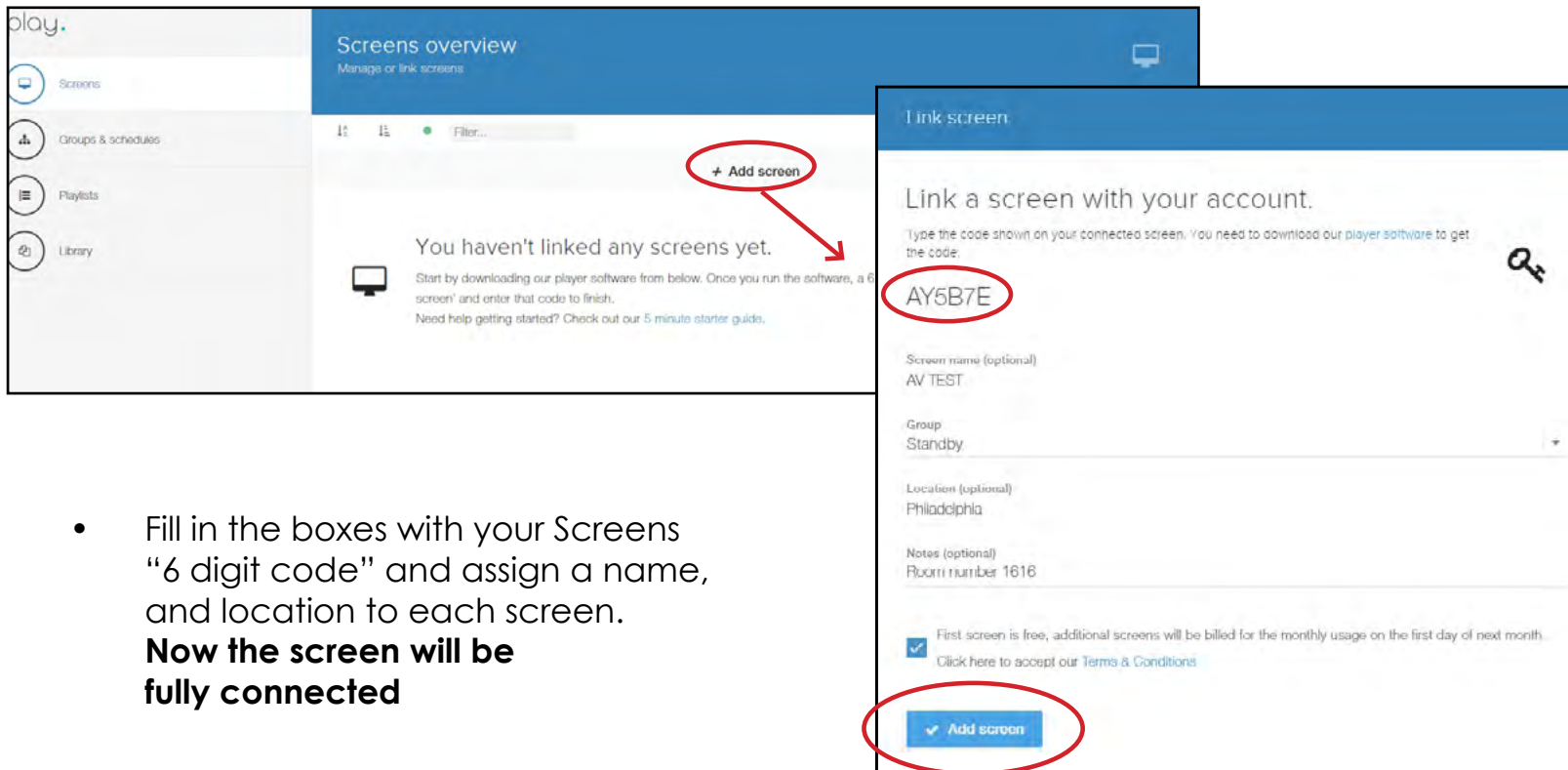


Enter your Google Sign In Credentials, or create a new account to be able to download apps through the store.

- Once signed in to the Google Play Store, search for Play Signage as per the image below. Tap on the Green INSTALL icon and it will be downloaded and installed automatically.
- Once completed, go to the home screen, or the app drawer and tap the app to launch it. You will now see a 6 digit code displayed



- Login on your Play Signage account and in the **Screens** tab, click “Add Screen”



- Fill in the boxes with your Screens “6 digit code” and assign a name, and location to each screen.  
**Now the screen will be fully connected**