

## Preparation

- 1 Open the clamping rail that will hold the print at the top. This is the rail that does not contain the mounting arm.
- 2 Place print into the clamping rail, keeping it taut.
- 3 Close the clamping rail.

Open the clamping rail that will hold the print at the bottom. This rail contains a mounting arm which is used to attach the segmented pole when setting up the display. Follow Steps 1 through 3 for placing the print into the bottom rail.

Repeat these steps with the second print if mounting a double-sided Easy Display.

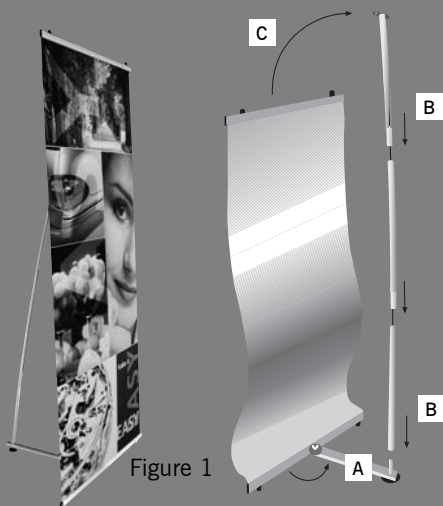


Figure 1

## Assembly - Easy Display

Figure 1

- A Move the mounting arm until it is at a 90 degree angle. Tighten the wing nut to keep the arm in place.
- B Put the segmented pole together and place it on top of the mounting arm thorn.
- C Once the segmented pole is attached over the thorn, slightly angle the top rail and insert the plastic piece into the allotted area.

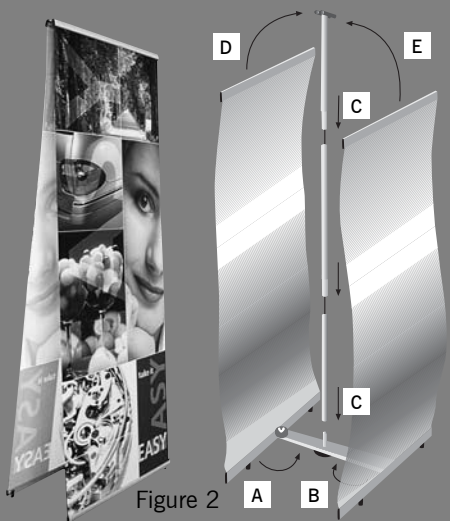
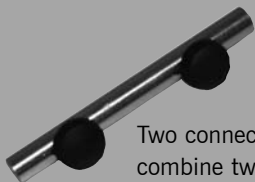


Figure 2

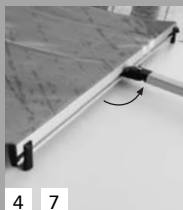
## Assembly - Easy Display (double-sided)

Figure 2

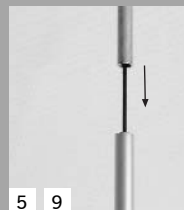
- A Move the mounting arm until it is at a 90 degree angle. Tighten the wing nut on the first bottom rail to keep the arm in place.
- B Attach the second bottom rail to the mounting arm and tighten the wing nut.
- C Put the segmented pole together and place it on top of the mounting arm thorn.
- D Once the segmented pole is attached over the thorn, slightly angle the one of the top rails and insert the plastic piece into the allotted area.
- E Repeat Step D with the second print.



Two connectors can be used to combine two displays creating a larger advertising space.



4 7



5 9



5 9



6 10